

# Bucks County Playhouse 2023 Season Advertising Opportunities



Make our audience, your audience.  
Reach our affluent, educated and engaged patrons!

## Five-Show Program Ads for 170 Performances

Full Page - \$2,870

Half Page - \$1,525

Quarter Page - \$1,055

Additional one to four-show options are available, starting at \$350

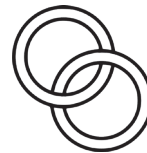
## 2022 Season Audience Demographics



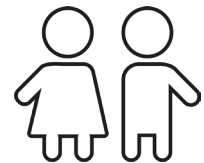
Average Annual Income  
\$126K



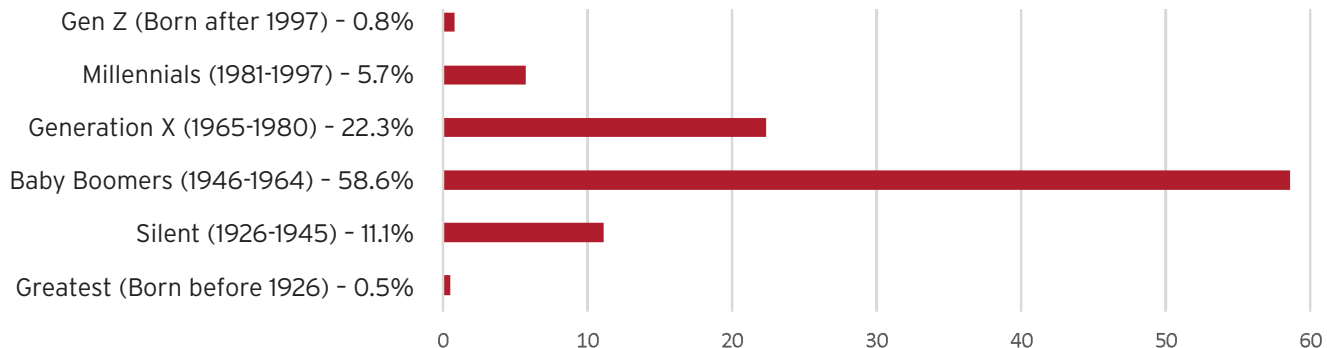
68.5%  
Bachelor's degree  
or higher



62.9%  
Married



50%  
with Children



## Inquire about Advertising today!

Contact: Maurya Joyce-Kershner  
267-930-4816 • [mkershner@buckscountypayhouse.org](mailto:mkershner@buckscountypayhouse.org)

[BucksCountyPlayhouse.org](http://BucksCountyPlayhouse.org)

